



9		5	8
	1	0	
4		7	2
3			6

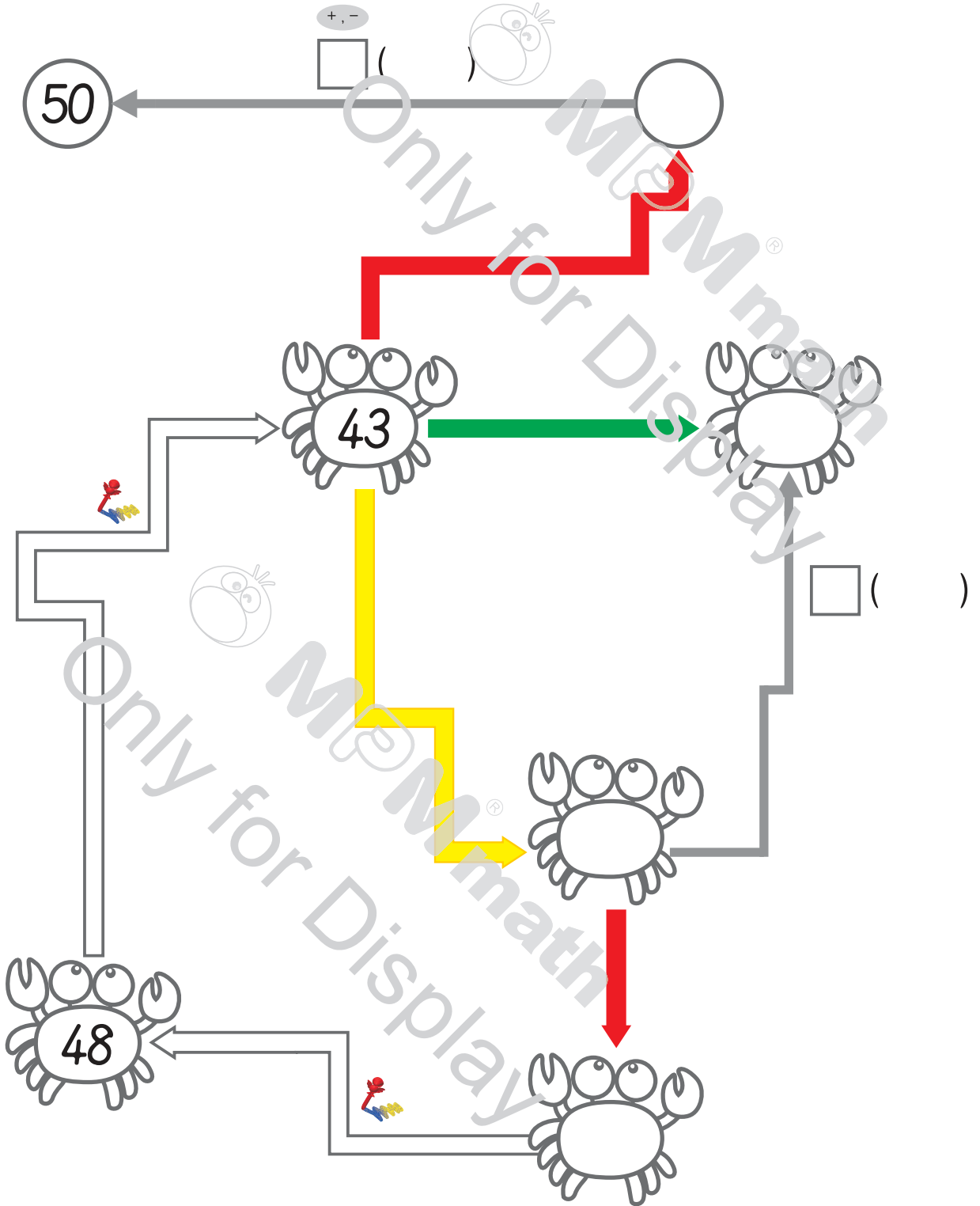
	↓↓↓		→→→		→→→↓		←←←↑
6							

8		B	4
5	2	3	C
0	7	1	D
A	6	9	

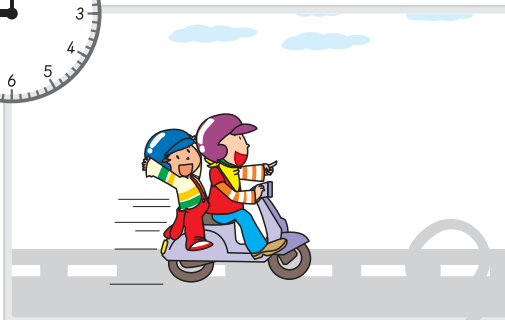
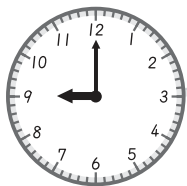


A↑↑↑	B↓↓←	C←←←	D←←↑

$+8$ →	-5 →	$+3$ →	-6 →
-----------	-----------	-----------	-----------

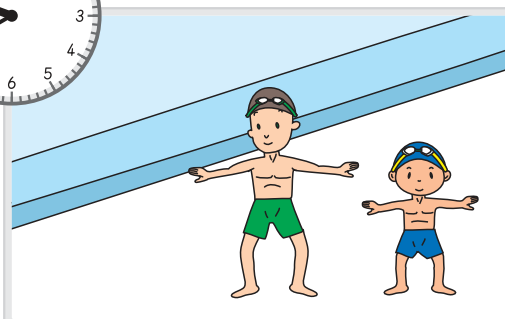
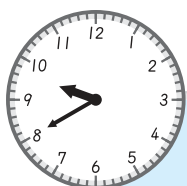


David and his brother go for a swim at 9:00 in the morning.



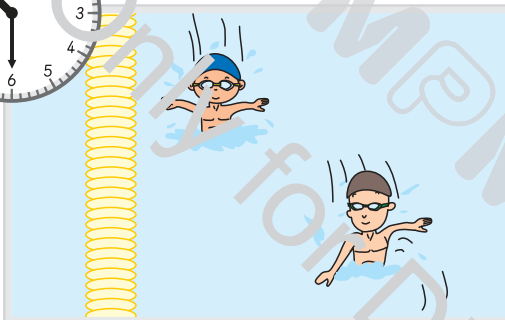
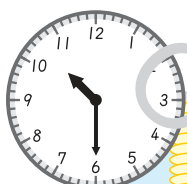
They will arrive there
30 minutes later.

It will be ____ past ____ o'clock.



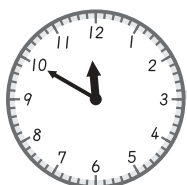
They will warm up for
15 minutes.

It will be ____ minutes till
____ o'clock.



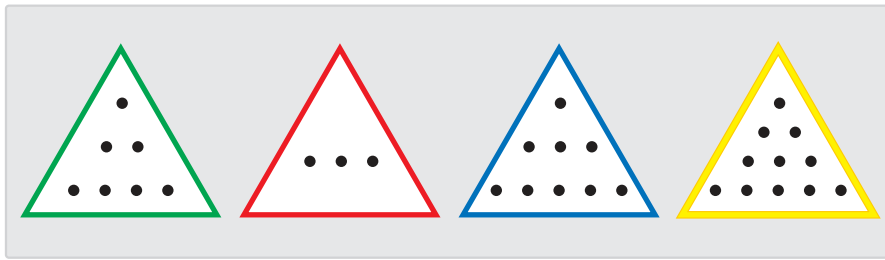
They will swim 1 more hour.

It will be ____ past ____ o'clock.

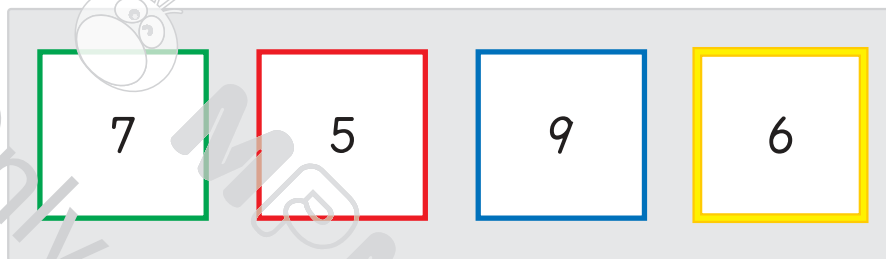
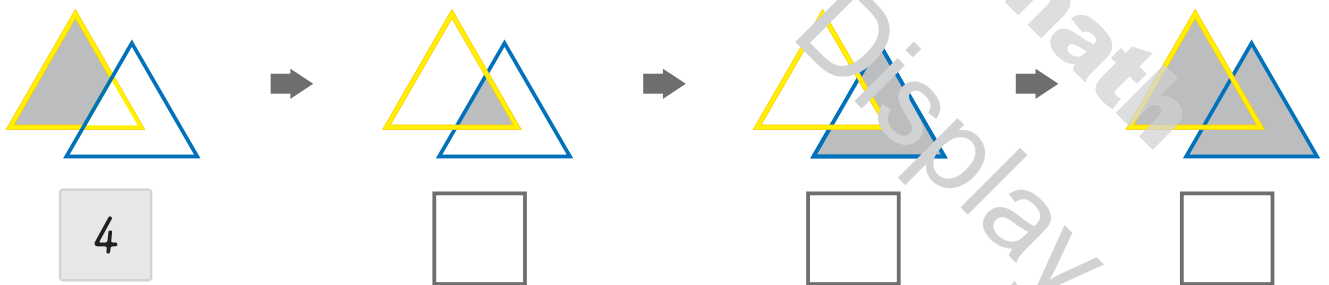
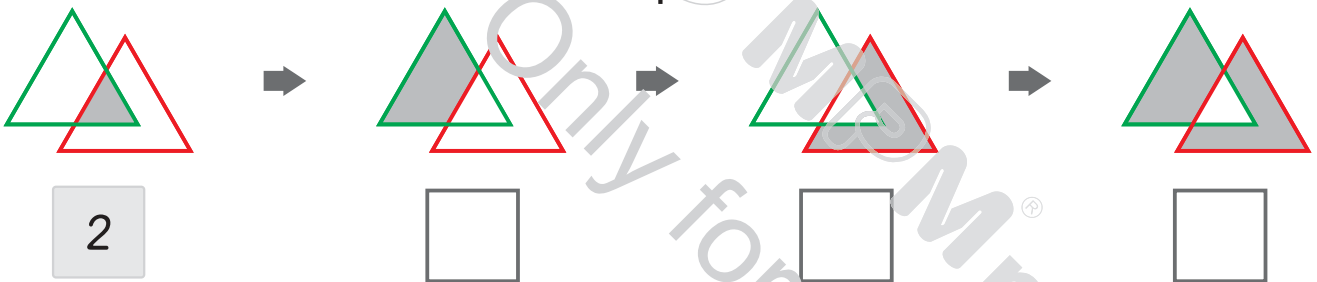


They will dry their hair for
5 minutes.

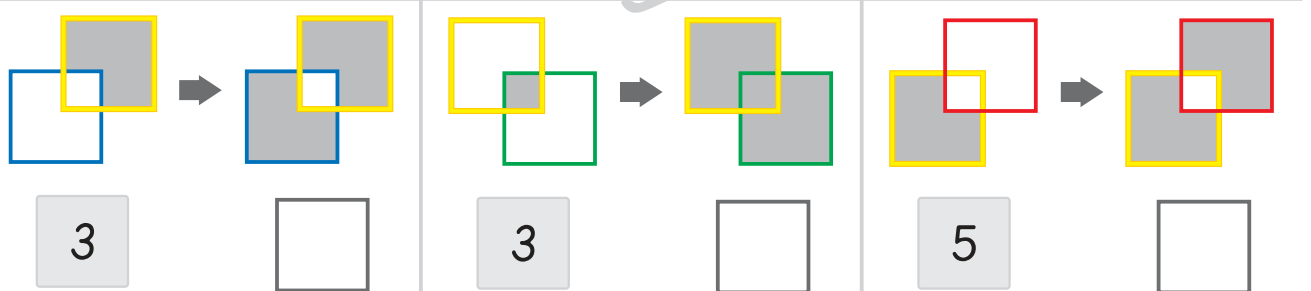
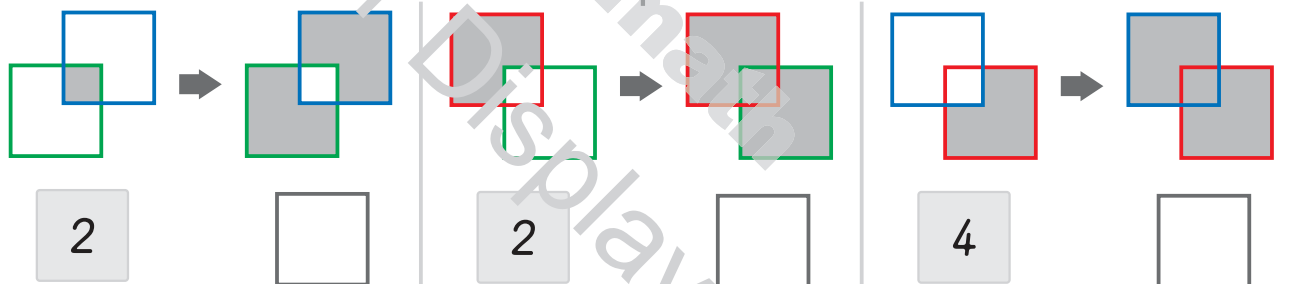
It will be ____ minutes till
____ o'clock.



According to the quantities of "●" above, fill in the below with correct numbers for the parts.



According to the quantities of "●" above, fill in the below with correct numbers for the parts.

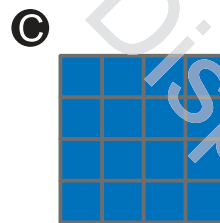
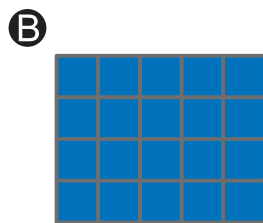
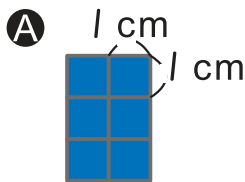


Fill in the blanks with face, vertex, and edge.



- Use  and  to make a cube. It has () edges.

- Which of **A** ~ **D** can be a face of this cube? ()



- Are all the faces the same size? They are called (congruent) faces.

Which ones are correct? _____

- A** Leo has 12 sticks of 5 cm each, 10 soft beans, and 6 square cards of 4 cm each face. He can make a cube.
- B** Sharon has 6 sticks of 3 cm each, 6 sticks of 5 cm each, 8 soft beans, and 2 square cards of 6 cm each face. She can make a cube.
- C** Joe has 8 sticks of 7 cm each, 4 sticks of 5 cm each, and 8 soft beans. He can make a cube.
- D** Tian has 8 soft beans, 4 sticks of 2 cm each, 15 sticks of 3 cm each, 4 sticks of 5 cm each, and 8 square cards of 3 cm each face. She can make a cube.